



2022

 **LogicalOutcomes**  
Annual Report 2022

## Contents

- 2** Message from the President and Executive Director

---

- 3** Board of Directors

---

- 4** Evaluation

---

- 5** Community Development

---

- 6** SIS

---

- 7** DHIS2

---

- 8** Financial Report

---



## Message from Salima Shariff, President and Neil Price, Executive Director

We are delighted to gather at our 2022 AGM to share information about our strategic directions, financial health and many successes. While we work to emerge from the global pandemic, there is a renewed sense of hope and optimism fueling the work we do across the social service and philanthropic sectors.

Earlier this year, LO staff and Board members came together to draft a set of strategic goals that will guide the organization over the next four years. We will focus on developing our evaluation platform known as SIS, expanding our internal human resources, and deepening our commitment to sharing tools with the sector. In preparation for this growth and expansion, LO moved our offices to CSI Spadina to facilitate opportunities to engage clients, partners and collaborators as we begin more in-person work.

Activating our commitment to Data Equity through documented approaches and diversifying our Board will continue to be key areas of focus over the next year. We have planned some tasks that will also be prioritized, including:

- Refresh the LO brand and website
- Implement our strategic plan and activities
- Grow our LO team and associate network

As we enter our 9th year as consultancy, we want to acknowledge that several of our longstanding Board members will be stepping down at the completion of their terms. We thank Dorothy Nyambi (past LO President), David Gotlib, Steven Uggowitz and Alex Goel for their many contributions to LO. We wish each of them well in their respective endeavours.

Absolutely none of our work is possible without the support of our clients and partners. We thank you for your continued trust and confidence in LO and look forward to another exciting year ahead!



**Salima Shariff**



**Neil Price**



## Board of Directors Update by Interim President, Salima Shariff

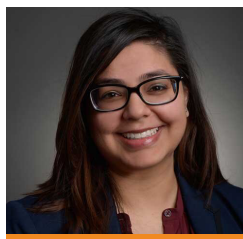
We are delighted to welcome Rolene Guilland to the LogicalOutcomes board. Rolene brings a wealth of expertise and experience in leading evaluation projects at LO and elsewhere.

Wishing our President, Dorothy Nyambi, all the best after many years of leading our work in the global health, social science, and development spaces as she continues to lead MEDA and act as a champion for thoughtful evaluation in the social services sector.

We say farewell for now to Alex Goel, for his extensive support in the digital health data, technology, and synoptic reporting. We wish Alex and his team at Topology Health all the best as they work towards advancing how our health care systems can create, store, and share data.

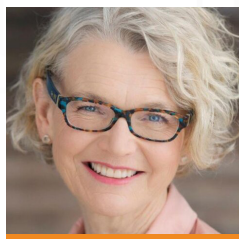
After many years of dedicated service to LogicalOutcomes, David Gotlib will also be leaving the board this year. With his unique background in both psychiatry and software development, David introduced LO to KoNote, an open-source system that assists front-line workers and administrators.

We would also like to thank Steven Uggowitz, who contributed many years of support and expertise in the digital health space through the eSHIFT Partner Network. We wish Steven and his team at eSHIFT all the best as they develop technology solutions for some of today's global digital health challenges.



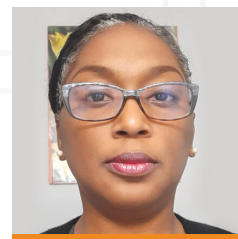
**Salima Shariff,  
President**

Salima is a researcher and strategist with expertise in leading complex evaluations and large-scale transformations. Salima is passionate about the interoperability of health and social service data and user experience in complex information systems.



**Elizabeth Rankin,  
Treasurer**

Elizabeth is a retired chartered accountant/chartered public accountant, with over 10 years' experience as a director on non-profit boards.



**Rolene Guilland,  
Director**

Rolene Guilland is a qualified research and evaluation professional with over eighteen years' experience supporting strategic planning processes; informing institutional and public-sector policy initiatives.

### We thank our past Board Members

- Gillian Kerr, Co-Founder and President Emeritus
- Martha McGuire,
- Dr Wanying, Zhao,
- Michael Potvin,
- Sudip Minhas,
- Serge Eric Yakeau Dijam



## Service Area Updates — Evaluation

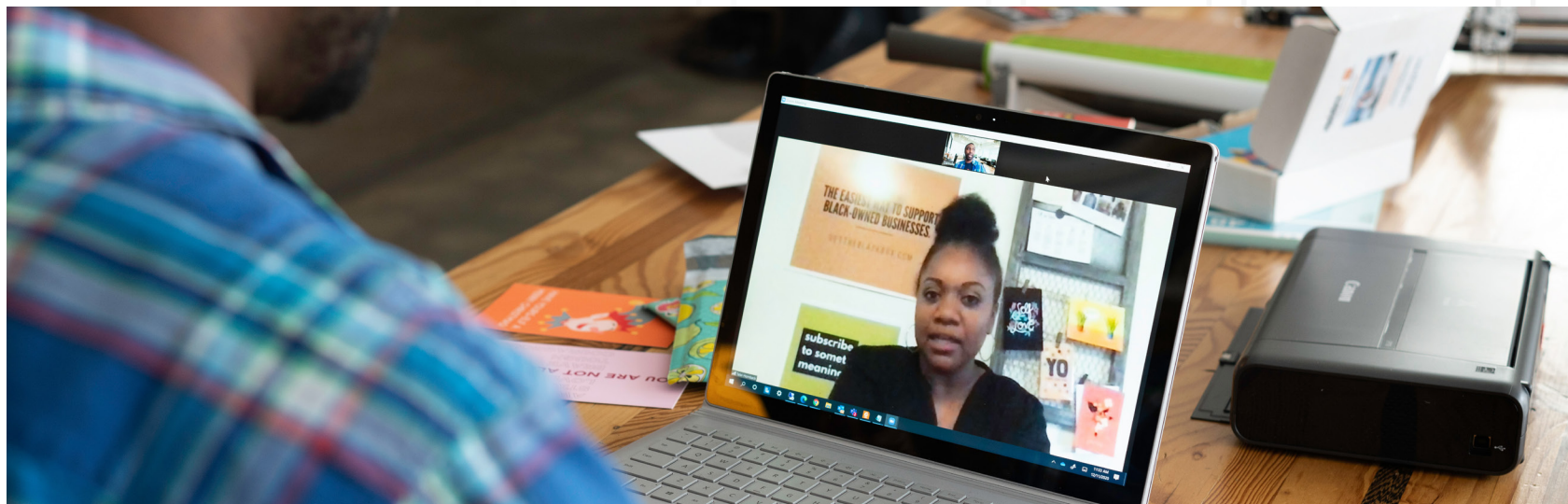
In FY2022 the Evaluation practice expanded in both domestic and international assignments. With COVID-19, most of the work is being carried out virtually, supported by LogicalOutcomes' long-standing experience in the use of virtual tools. This is likely to continue as the rest of the world is becoming more comfortable with virtual meetings.

LogicalOutcomes has played a strong role in strengthening evaluation practice through Martha's work as a Canadian Evaluation Society Fellow, a member of the CES credentialing board and as chair of the European Evaluation Society's thematic working group on professionalization.

As a group, we are moving towards having a core team of credentialed evaluators and further expanding our practice as more members of the team can take on the role of team leader.



**Martha McGuire**







## Service Area Updates — Community Development

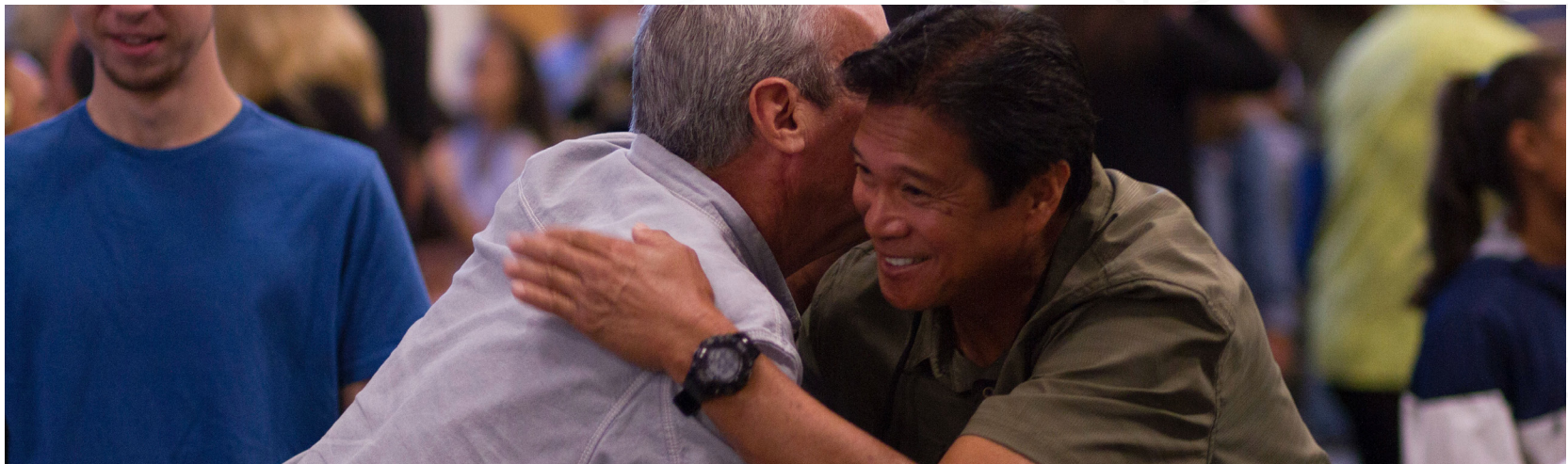
In FY2022, LO's Community Development practice has experienced significant growth. We are delighted to continue working with lead clients TAIBU Community Health Centre and the Student Association of George Brown College, while starting new relationships with Greater Essex County District School Board, the Alliance for Healthier Communities, Fife House, Hard Feelings, Fleming College, Humber College, and Rexdale Community Health Centre.

As we recover from the COVID-19 pandemic, our work has focused on supporting organizations through stakeholder engagement, strategy, and equity-focused initiatives. I want to thank our clients and partners for entrusting LO with this critically important work.

I also want to thank LO consultants Sara Gaudon, Peggy Tseung, Taeja McKoy and Tanika McCleod for their outstanding leadership.



Neil Price





## Service Area Updates — SIS

The last year has been an exciting one for SIS. Thanks to ongoing support from the Ontario Trillium Foundation (OTF) and other funders, we've built enough new functionality to start referring to our emerging system as 'SIS 2.0'. Updates to Microsoft's Power Platform have allowed our team to leverage Power Apps and Power Pages to create new client management systems, a new metadata registry and an evaluation planning application, which promises to make logic model building a snap! We're already starting to use this functionality with select clients and are looking forward to rolling it out for OTF grantees and other users soon.

In addition to facilitating SIS development, our vendor relationship with OTF has led to several exciting new projects. For example, the Children and Youth Planning Table's Well-being Shared Measurement Database team is now using SIS to promote shared measurement tools and standardized evaluation practices in the Waterloo Region. We've also begun work with the Community Resource Centre (Killaloe), to build an integrated evaluation system and client management system using SIS tools.

With 2023 on the horizon, we're looking forward to making 'SIS 2.0' available and to growing our team so that more mission-driven organizations can benefit. With some big projects incoming, it promises to be an eventful year.



Sophie Llewelyn





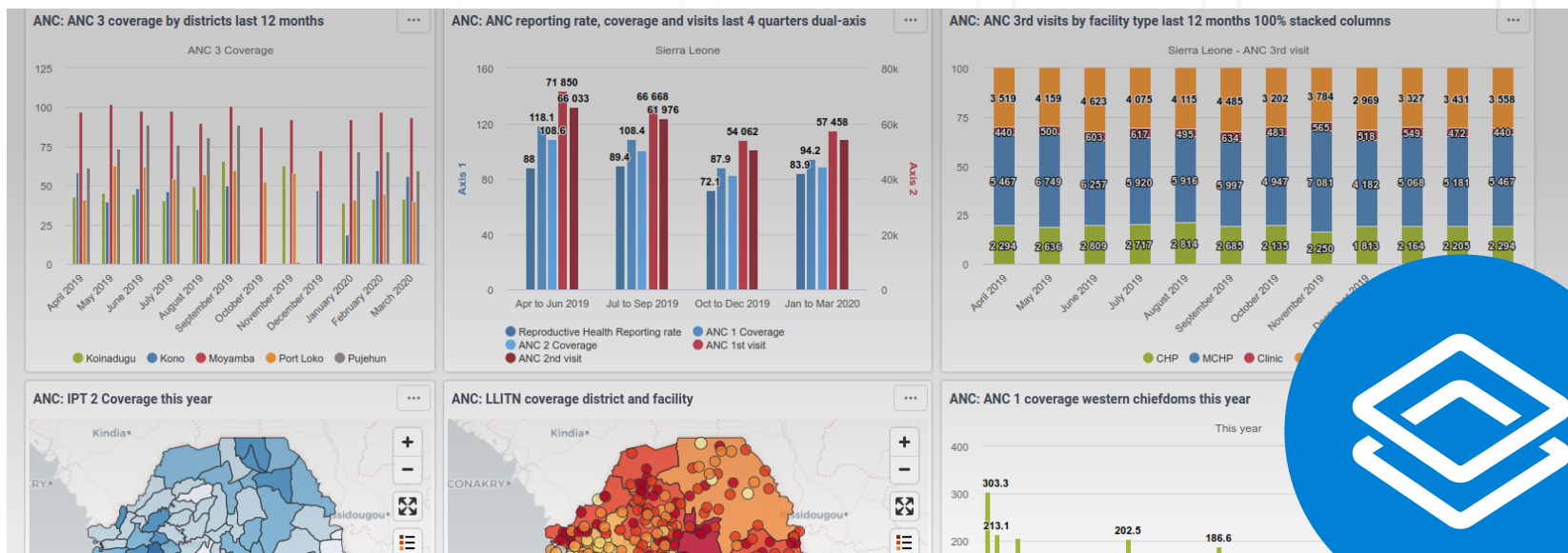
## Service Area Updates – DHIS2

This year, LogicalOutcomes solidified a role as valued DHIS2 vendor for the international charity CARE, after years of co-developing DHIS2 for their international project reporting 'MEAL' system (MEAL stands for Monitoring, Evaluation, Accountability and Learning.)

In previous years we have contributed to project level DHIS2 systems for CARE Canada and CARE USA. This PIIRS project includes working with their international digital team and sharing expertise from longtime vendor AddendAnalytics on a DHIS2 > Azure > PowerBi ecosystem that CARE is developing. Our analysts Georgi and Kristiyan lead this work, and we look forward to continuing to support CARE, our longest standing DHIS2 client.



Sara Gaudon



## 2021-22 Financial Report — Balance Sheet

	As of Jun. 30, 2022	As of Jun. 30, 2021
<b>ASSETS</b>		
Cash and Cash Equivalent - CAD	51,825.75	72,339.28
Cash and Cash Equivalent - USD	31,183.84	67,366.76
Total Cash and Cash Equivalent	\$83,009.59	\$139,706.04
Accounts Receivable (A/R) - CAD	30,407.67	63,100.65
Accounts Receivable (A/R) - USD	9,848.71	19,423.78
Total Accounts Receivable (A/R)	\$40,256.38	\$82,524.43
<b>Total Assets</b>	<b>\$123,265.97</b>	<b>\$222,739.34</b>
<b>LIABILITIES AND EQUITY</b>		
Accounts Payable (A/P)	-5,452.81	25,939.45
Credit Card	461.94	179.81
GST/HST Payable	12,727.40	3.46
Federal Taxes	2,099.27	2,085.40
Total Current Liabilities	\$10,529.19	\$29,258.12
Deferred Revenue	0.00	0.00
Total Non-current Liabilities	\$0.00	\$0.00
Total Liabilities	\$10,529.19	\$29,258.12
Equity		
Opening Balance Equity	0.00	0.00
Retained Earnings	193,481.22	72,412.93
Excess Revenue For The Year	-80,744.44	121,068.29
Total Equity	\$112,736.78	\$193,481.22
<b>TOTAL LIABILITIES AND EQUITY</b>	<b>\$123,265.97</b>	<b>\$222,739.34</b>



## 2021-22 Financial Report — Revenue and Expenditures

	Jul 1, 2021 - Jun 30, 2022	Jul 1, 2020 - Jun 20, 2021
<b>REVENUE</b>		
DHIS2	153,843.35	200,658.43
SIS Platform	384,142.11	425,288.87
Evaluation	268,178.46	148,928.90
Community Development	52,423.45	20,250.00
SME Consulting	3,750.00	
<b>Total Revenue</b>	<b>\$862,355.44</b>	<b>\$795,148.50</b>
<b>EXPENSES</b>		
Executive Director Fees	52,773.40	17,130.00
Office Manager Fees	42,478.54	24,162.63
Marketing & Development	3,988.93	3,912.06
Insurance	3,764.88	4,706.64
Consultant Fees & Project Expenses	795,012.05	568,041.78
Operational Expenses	64,240.31	47,162.70
<b>Total Expenses</b>	<b>\$962,258.11</b>	<b>\$665,115.81</b>
<b>OTHER EXPENSES</b>		
Exchange Gain or Loss	-19,158.23	9,088.07
<b>Total Other Expenses</b>	<b>-19,158.23</b>	<b>9,090.50</b>
<b>EXCESS REVENUE</b>	<b>-\$80,744.44</b>	<b>\$121,068.29</b>

With revenues under \$1 million, LogicalOutcomes is not required to undergo a financial audit (Canada Not-for-profit Corporations Act). A compilation engagement by Allay LLP will be conducted by Dec 31, 2022.

Contact [finance@logicaloutcomes.net](mailto:finance@logicaloutcomes.net) for more information.